

YVL88II

Full Vision Surface Mounter

MAINTENANCE PARTS LIST

CONTENTS

Maintenance Parts

■ Feeder Holder E	1
■ Feeder Holder C	1
■ Feeder Floating Detection (Front)	2
■ Feeder Floating Detection (Rear)	2
■ X-Axis	3
■ Y-Axis	3
■ W-Axis	4
■ Auto Width Conveyor (Option)	4
■ Manual Width Conveyor (Standard)	5
■ Head Combination	5
■ Body Head	6
■ Nozzle Selection	7
■ Nozzle Changer	8
■ Push Up	8
■ Locate Pin	9
■ Main Stopper	9
■ Sub Stopper	10
■ Push In	10
■ Edge Clamp	11
■ Moving Camera	11
■ Laser Back Light	12
■ Single Vision Camera A	12
■ Single Vision Camera B	13
■ Exterior	13
■ Main Box	14

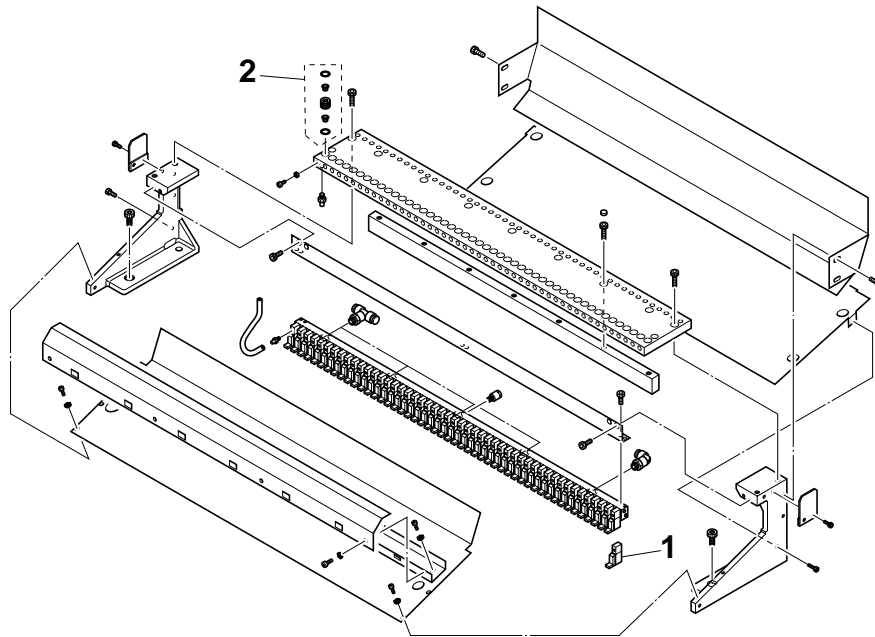


NOTE

- Rank A : The functions of these parts gradually deteriorate with operating time.
- Rank B : The machine stops immediately if the functions of these parts are disabled.
- Rank C : The machine still operates even if the functions of these parts are disabled, because there are many parts.
- Q'ty : The number of identical parts used in one machine.
-
-

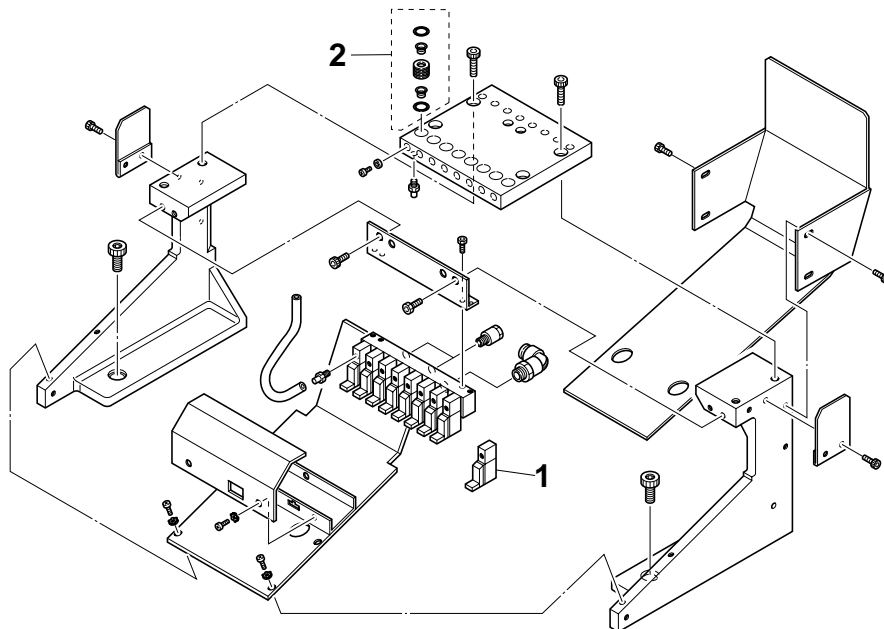
Maintenance Parts

Feeder Holder E



No.	Part No.	Part Name	Q'ty	Remarks	Rank
1	KU0-M3410-41X	VALVE KIT	50		C
2	KG2-M3407-A0X	AIR JOINT	50		A

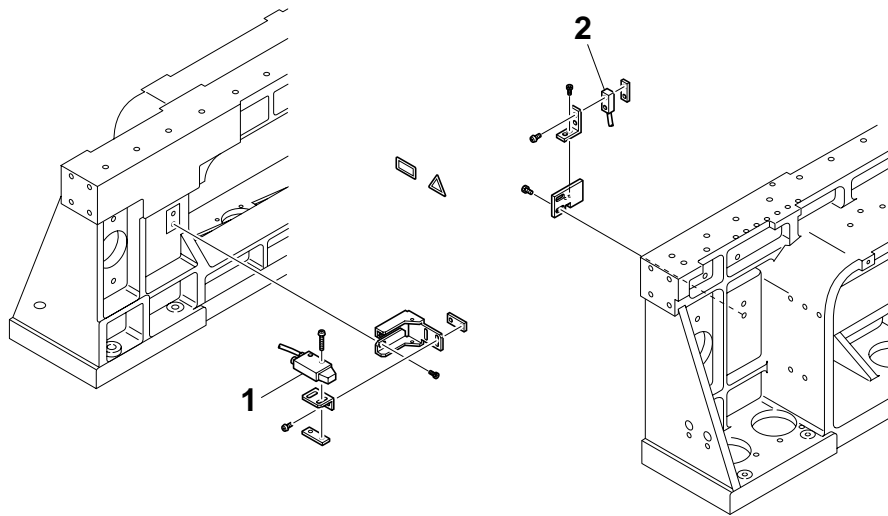
Feeder Holder C



No.	Part No.	Part Name	Q'ty	Remarks	Rank
1	KU0-M3410-41X	VALVE KIT	8		C
2	KG2-M3407-A0X	AIR JOINT	8		A

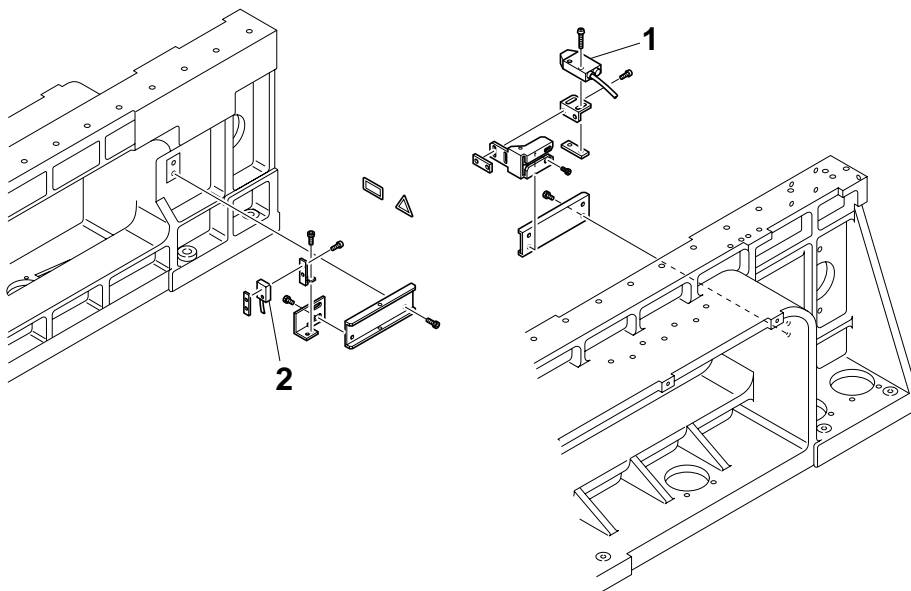
Maintenance Parts

Feeder Floating Detection (Front)



No.	Part No.	Part Name	Q'ty	Remarks	Rank
1	KG9-M3455-11X	SENSOR S ASSY	1	FOR FEEDER (Photo Transmitter)	B
2	KH5-M3456-A0X	SENSOR, R	1	FOR FEEDER (Photo Receiver)	B

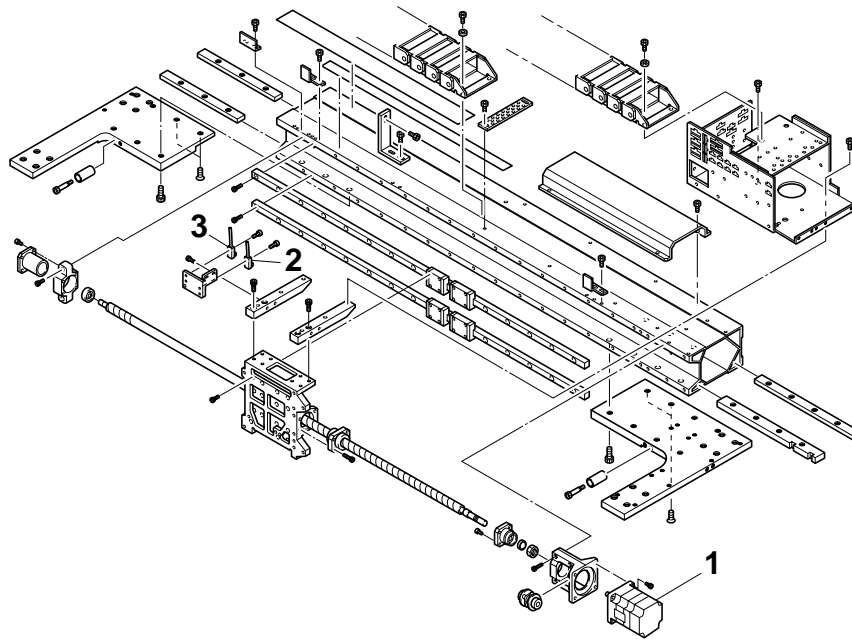
Feeder Floating Detection (Rear)



No.	Part No.	Part Name	Q'ty	Remarks	Rank
1	KG9-M3455-11X	SENSOR S ASSY	1	FOR FEEDER (Photo Transmitter)	B
2	KH5-M3456-A0X	SENSOR, R	1	FOR FEEDER (Photo Receiver)	B

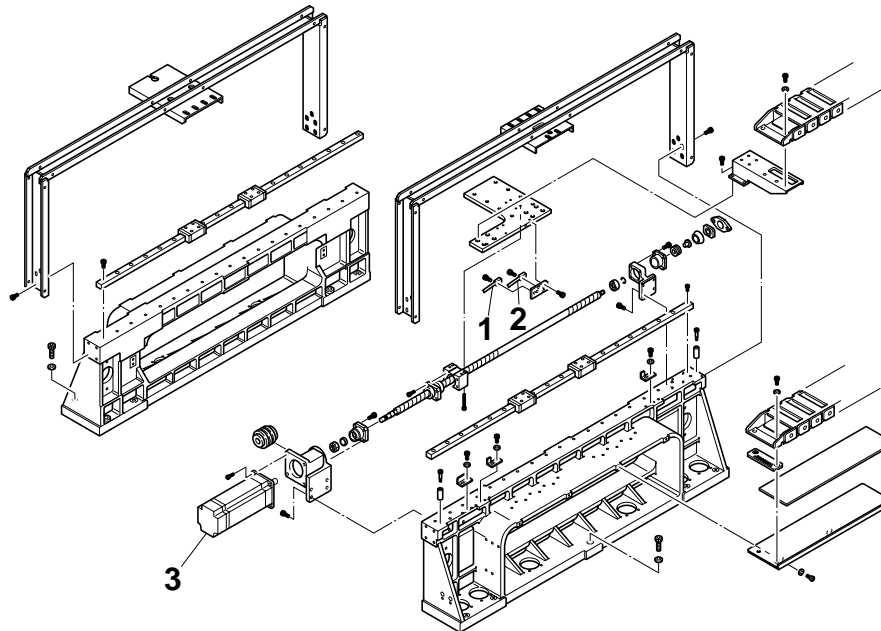
Maintenance Parts

X-axis



No.	Part No.	Part Name	Q'ty	Remarks	Rank
1	90K55-87134X	AC SERVO MOTOR	1	FOR X AXIS	B
2	KM0-M655A-00X	SENSOR, 1-1	1	FOR 2ND LIMIT	B
3	KM0-M655E-00X	SENSOR, 1-2	1	FOR ORG.	B

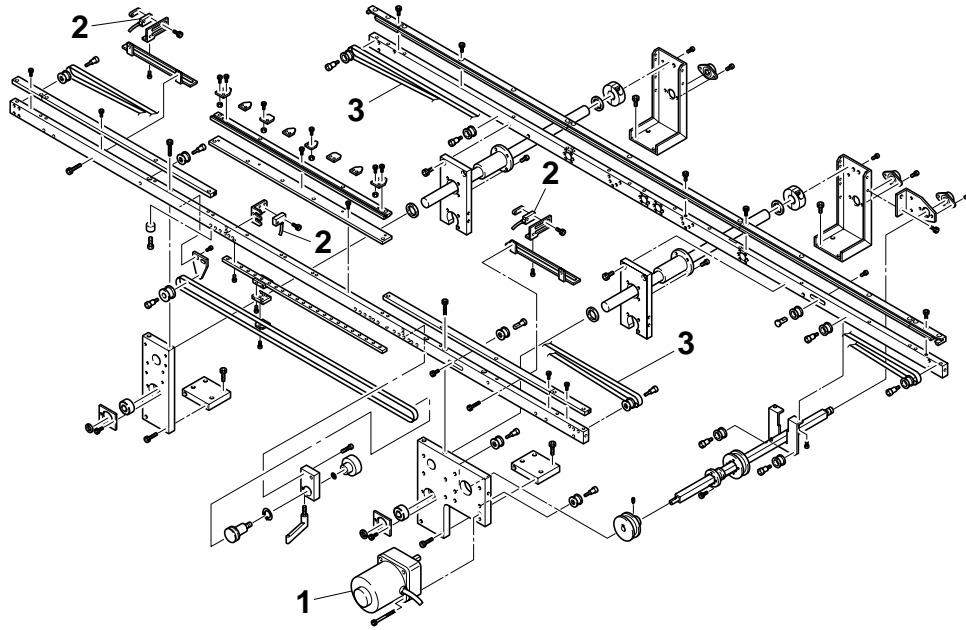
Y-axis



No.	Part No.	Part Name	Q'ty	Remarks	Rank
1	KM0-M655A-00X	SENSOR, 1-1	1	FOR 2ND LIMIT	B
2	KM0-M655E-00X	SENSOR, 1-2	1	FOR ORG.	B
3	90K55-8A134Y	AC SERVO MOTOR	1	FOR Y AXIS	B

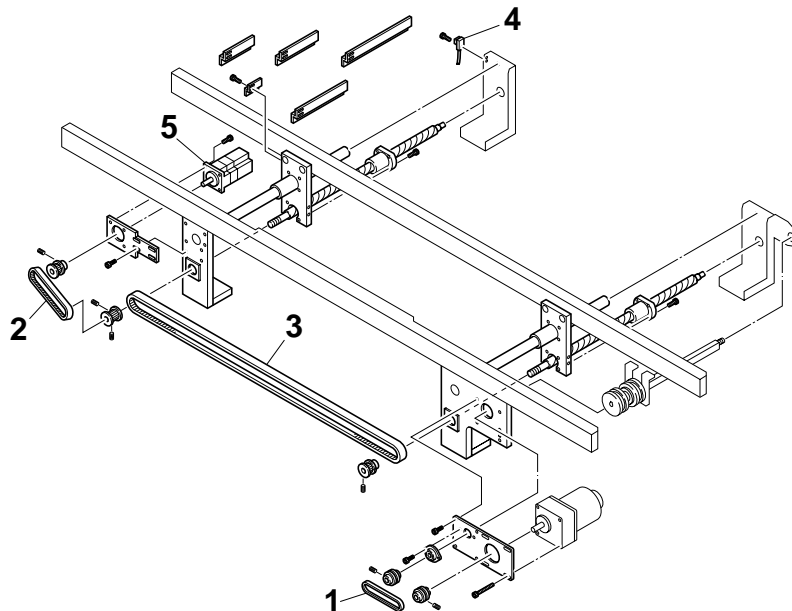
Maintenance Parts

W-Axis



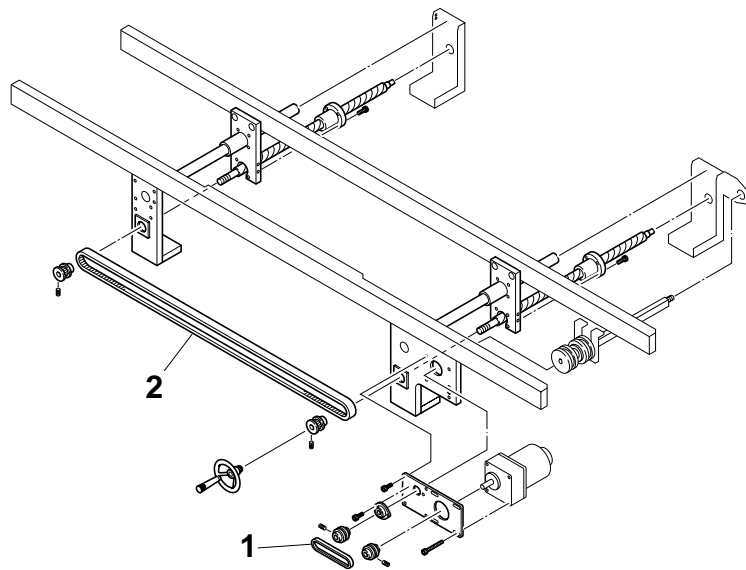
No.	Part No.	Part Name	Q'ty	Remarks	Rank
1	KH4-M4886-00X	MOTOR ASSY 6	1	FOR CONVEYOR	B
2	KH4-M655F-20X	SENSOR, 1-3	3	FOR P.C.B	B
3	KM0-M9129-00X	BELT, 1 CONVEYOR	2		A

Auto Width Conveyor (Option)



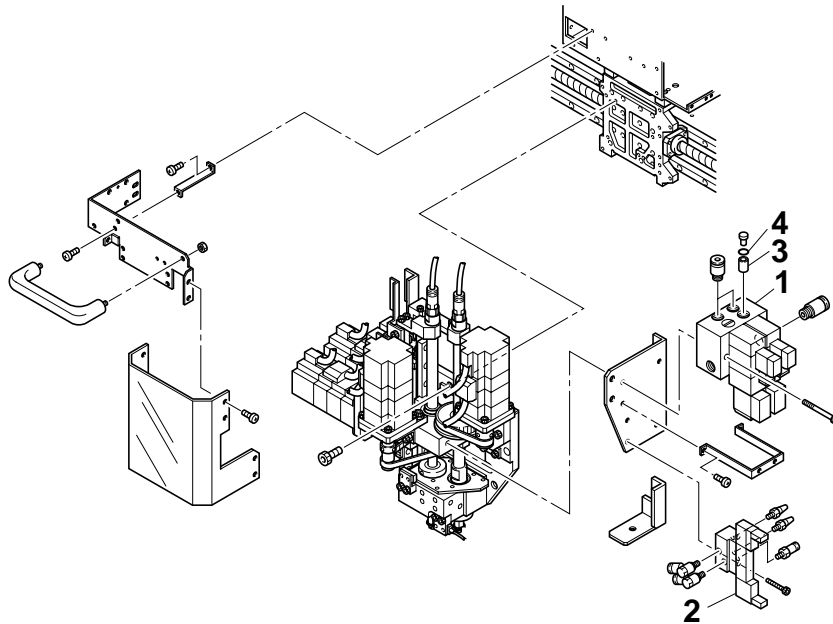
No.	Part No.	Part Name	Q'ty	Remarks	Rank
1	KH2-M9110-10X	BELT, PULLEY MOTOR	1		A
2	KG7-M9114-00X	BELT, MOTOR W AXIS	1		A
3	KG7-M9115-00X	BELT, W AXIS	1		A
4	KH2-M655E-10X	SENSOR, 1-2	1	FOR W AXIS ORG.	B
5	90K55-4W032W	AC SERVO MOTOR	1	FOR W AXIS	B

Manual Width Conveyor (Standard)



No.	Part No.	Part Name	Q'ty	Remarks	Rank
1	KH2-M9110-00X	BELT, PULLEY MOTOR	1		A
2	KG7-M9115-00X	BELT, W AXIS	1		A

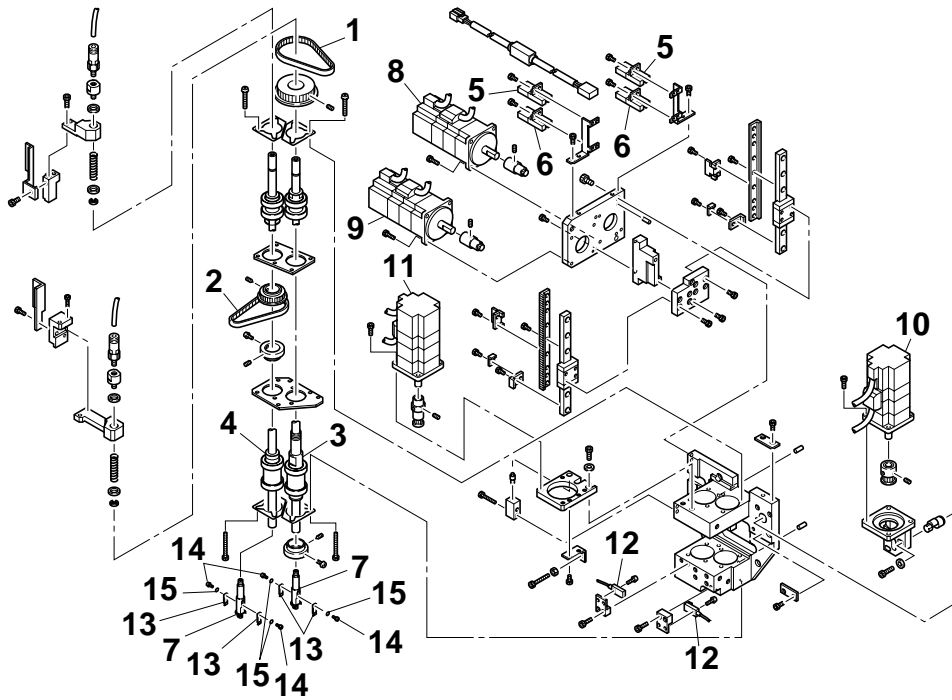
Head Combination



No.	Part No.	Part Name	Q'ty	Remarks	Rank
1	KM0-M7182-00X	EJECTOR	1		B
2	KG7-M7188-00X	VALVE SUB ASSY	1	VALVE + PACKING	B
	KG7-M7189-00X	SET, PACKING	1	PACKING (CRCZ-0016W)	
3	KH5-M7182-C0X	FILTER	2		A
4	90990-17J006	O-RING	2		A

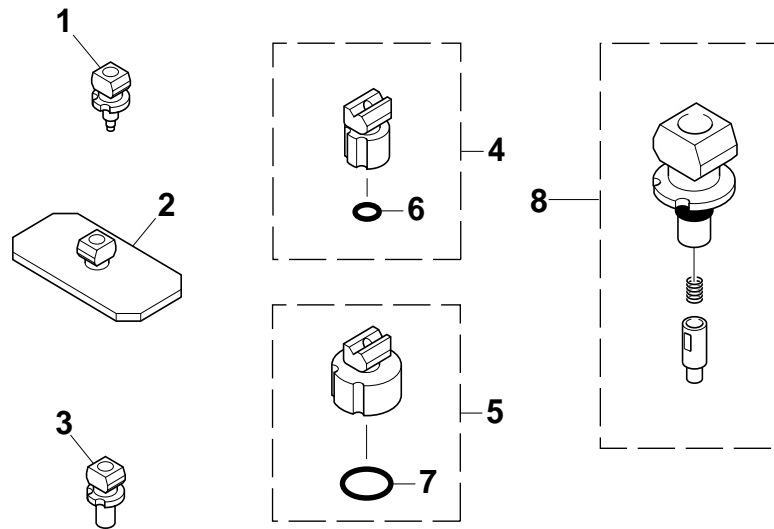
Maintenance Parts

Body Head



No.	Part No.	Part Name	Q'ty	Remarks	Rank
1	KH5-M7116-00X	BELT, HEAD 1	1		A
2	KG7-M7116-00X	BELT, HEAD 2	1		A
3	KH5-M7130-00X	SPLINE HEAD ASSY 1	1		B
4	KH5-M7140-00X	SPLINE HEAD ASSY 2	1		B
5	KG7-M7151-00X	SENSOR, 1	2		B
6	KG7-M7152-00X	SENSOR, 2	2		B
7	KG7-M7173-A0X	HOLDER NOZZLE COMP	2		B
8	90K55-4W034A	MOTOR ASSY	1		B
9	90K55-4W034B	MOTOR ASSY	1		B
10	90K55-4W034C	MOTOR ASSY	1		B
11	90K55-4W034D	MOTOR ASSY	1		B
12	KM0-M665A-10X	SENSOR, 1-1	2		B
13	KG7-M7137-A0X	LEAF SPRING	4		A
14	KG7-M7169-00X	SCREW	4		A
15	KG7-M7170-00X	WASHER	4		A

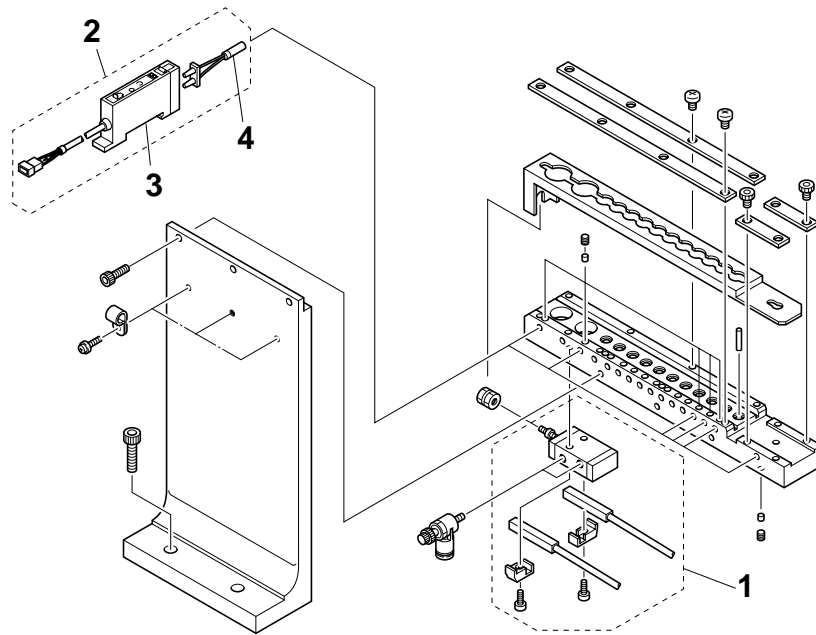
Nozzle Selection



No.	Part No.	Part Name	Q'ty	Remarks	Rank
1	KM0-M711A-30X	FLOATING NOZZLE	2	TYPE 31	A
2	KM0-M711B-02X	NOZZLE B COMP	1	TYPE 32-1	A
3	KM0-M711C-02X	NOZZLE C	1	TYPE 32-2	A
4	KM0-M711D-00X	NOZZLE D COMP	1	TYPE 33	A
5	KM0-M711E-00X	NOZZLE E COMP	1	TYPE 34	A
6	90200-10J040	O-RING	1		A
7	90200-10J090	O-RING	1		A
8	KM0-M71MN-A0X	CIRCLE NOZZLE 3A	1		A

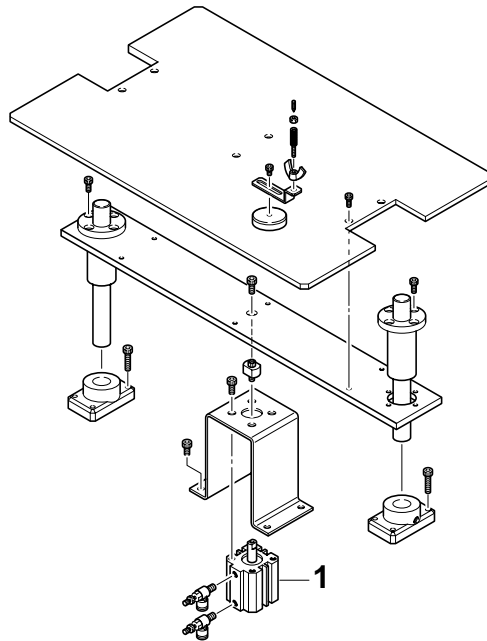
Maintenance Parts

Nozzle Changer



No.	Part No.	Part Name	Q'ty	Remarks	Rank
1	KM1-M9605-01X	CYLINDER, CLAMP	1		B
2	KH5-M655A-A1X	SENSOR, 1-1	6		B
3	KH5-M655A-03X	SWITCH, OPTICAL ASSY.	1	SPARE	B
4	KH5-M655A-02X	FIBER	1	SPARE	B

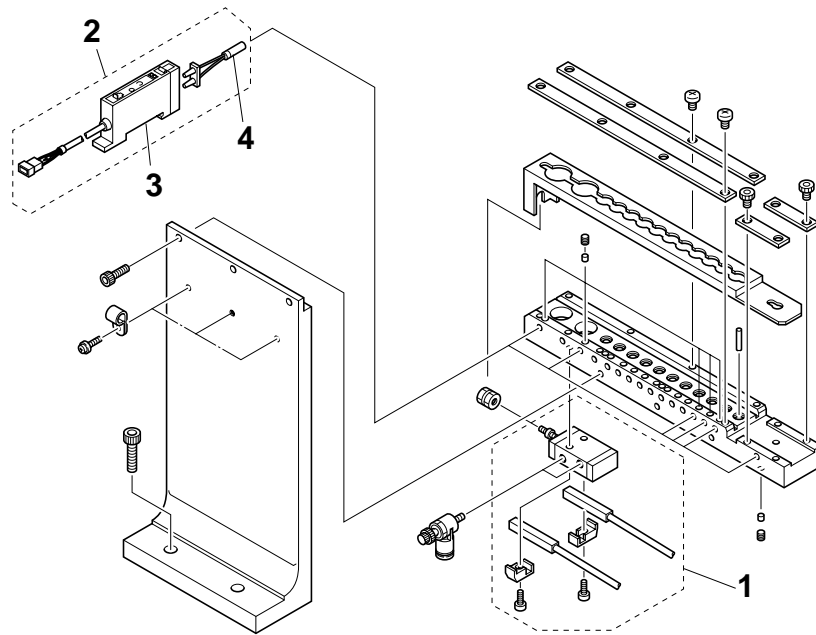
Push Up



No.	Part No.	Part Name	Q'ty	Remarks	Rank
1	KU0-M9217-00X	CYLINDER	1		B

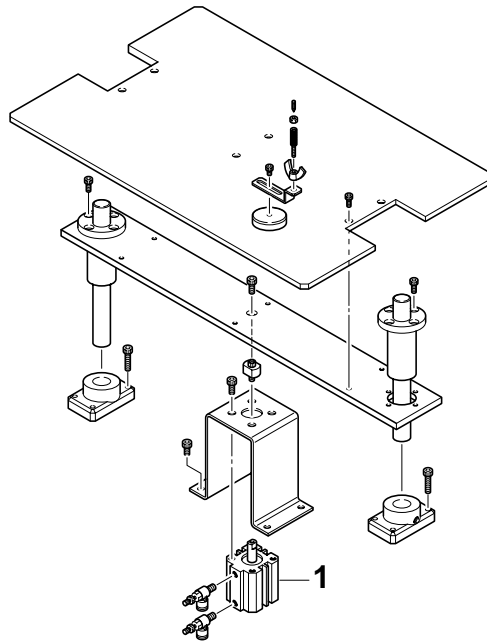
Maintenance Parts

Nozzle Changer



No.	Part No.	Part Name	Q'ty	Remarks	Rank
1	KM1-M9605-01X	CYLINDER, CLAMP	1		B
2	KH5-M655A-A1X	SENSOR, 1-1	6		B
3	KH5-M655A-03X	SWITCH, OPTICAL ASSY.	1	SPARE	B
4	KH5-M655A-02X	FIBER	1	SPARE	B

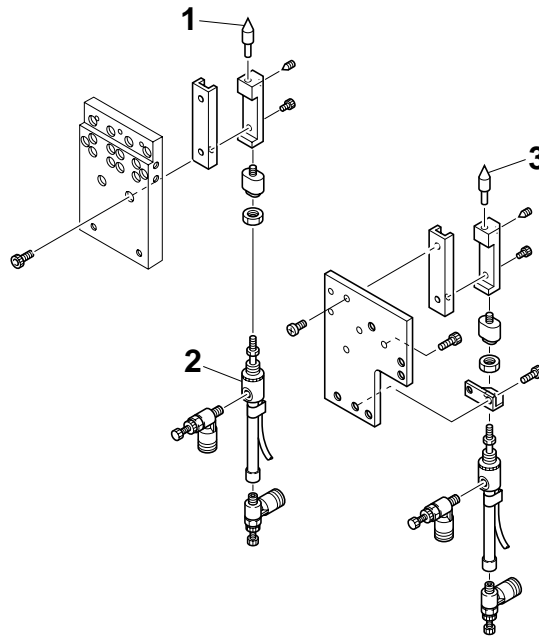
Push Up



No.	Part No.	Part Name	Q'ty	Remarks	Rank
1	KU0-M9217-00X	CYLINDER	1		B

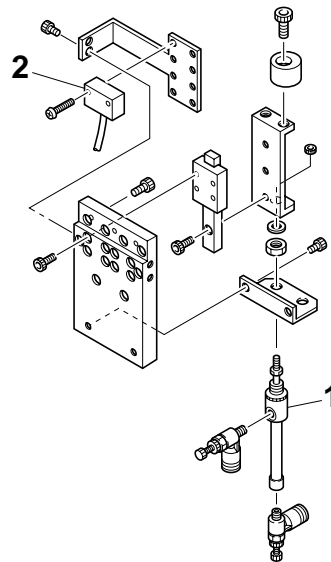
Maintenance Parts

Locate Pin



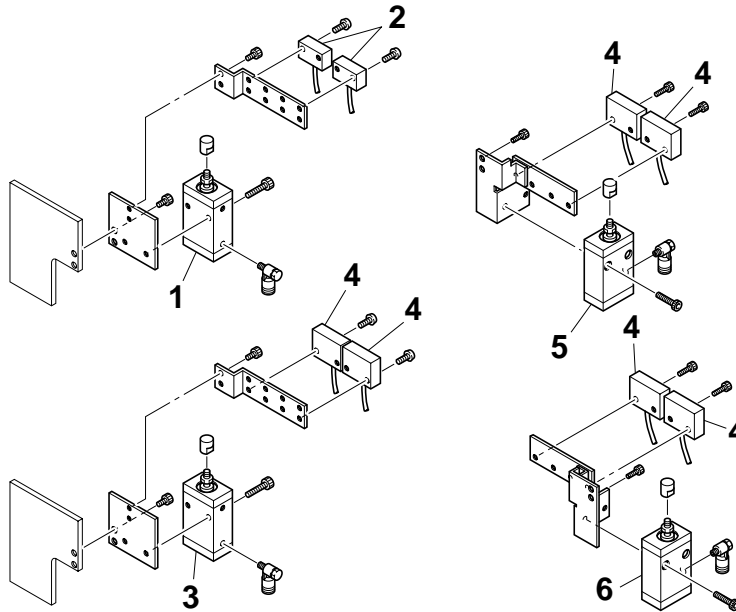
No.	Part No.	Part Name	Q'ty	Remarks	Rank
1	KU0-M9174-00X	PIN, LOCATION	1		A
2	KH5-M9176-00X	CYLINDER ASSY	2		B
3	KU0-M9174-10X	PIN, LOCATION	1		A

Main Stopper



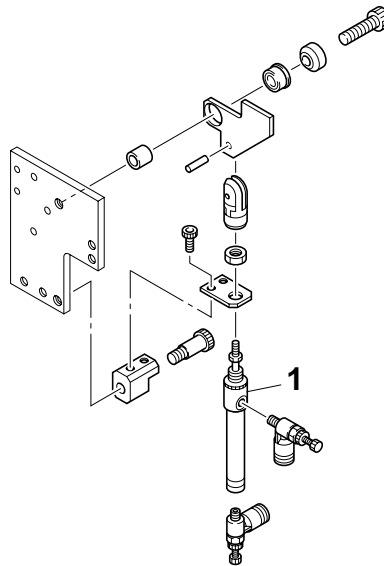
No.	Part No.	Part Name	Q'ty	Remarks	Rank
1	KG7-M9165-00X	CYLINDER	1		B
2	KM0-M655F-10X	SENSOR, 1-3	1	FOR P.C.B	B

■ Sub Stopper



No.	Part No.	Part Name	Q'ty	Remarks	Rank
1	K98-M9283-00X	CYLINDER	1		B
2	KM0-M655F-10X	SENSOR, 1-3	2	FOR P.C.B	B
3	K98-M9283-00X	CYLINDER	1		B
4	KM0-M655F-10X	SENSOR, 1-3	6	FOR P.C.B	B
5	K98-M9283-00X	CYLINDER	1		B
6	K98-M9283-00X	CYLINDER	1		B

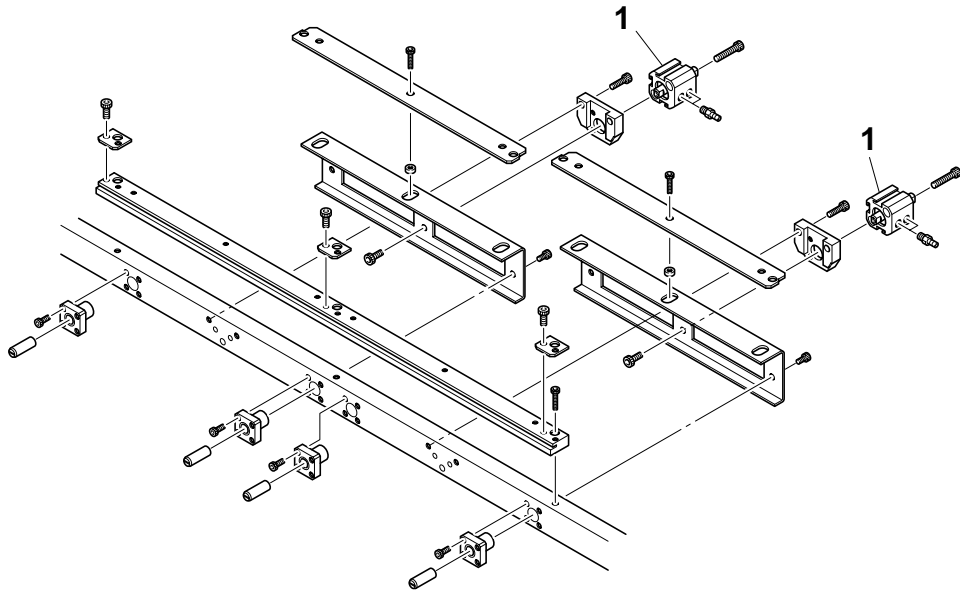
■ Push In



No.	Part No.	Part Name	Q'ty	Remarks	Rank
1	KG7-M9166-00X	CYLINDER	1		B

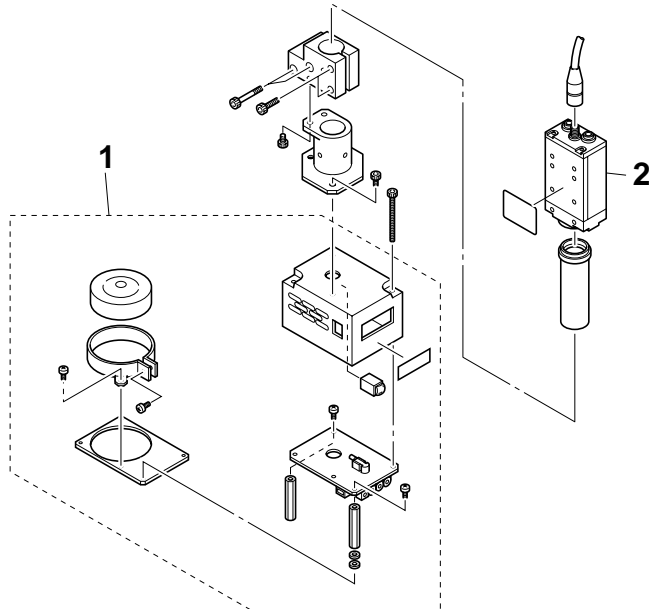
Maintenance Parts

Edge Clamp



No.	Part No.	Part Name	Q'ty	Remarks	Rank
1	KG7-M9236-00X	CYLINDER	2		B

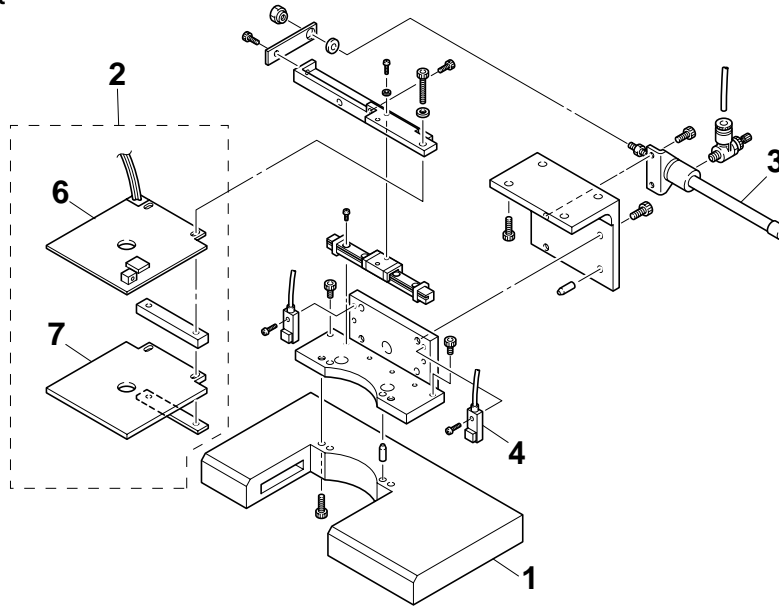
Moving Camera



No.	Part No.	Part Name	Q'ty	Remarks	Rank
1	KM8-M7600-00X	FIDUCIAL LIGHT ASSY	1		B
2	KG9-M7210-10X	CCD CAMERA	1		B

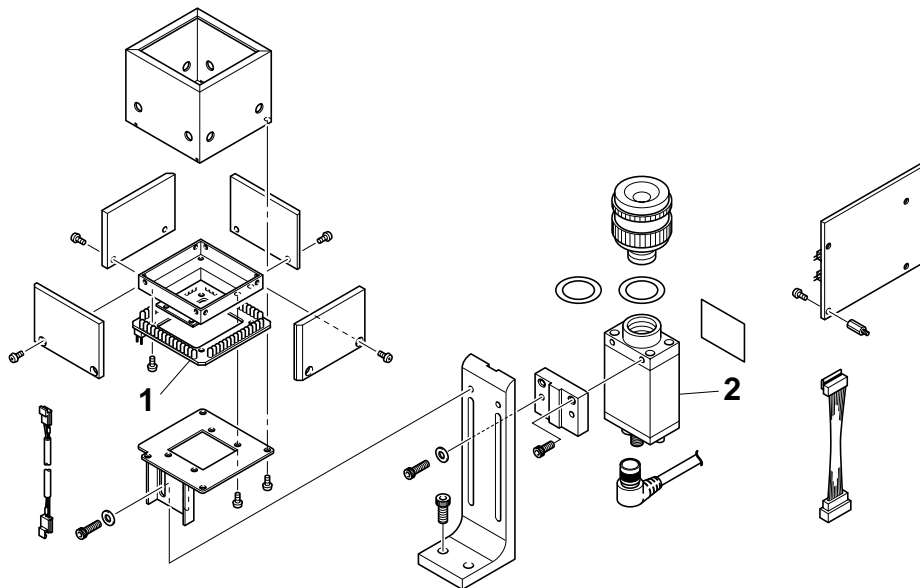
Maintenance Parts

Laser Back Light



No.	Part No.	Part Name	Q'ty	Remarks	Rank
1	KG7-M4548-00X	L.A.M. UNIT	1		B
2	KG7-M7160-00X	BACK LIGHT ASSY	1		B
3	KG7-M7168-00X	CYLINDER	1		B
4	KM0-M655A-20X	SENSOR, 1-1	1		B
5	KM0-M655A-10X	SENSOR, 1-1	1		B
6	KG9-M6463-12X	BACK LIGHT BOARD ASSY	1	SPARE PARTS	B
7	KG7-M7174-10X	DIFFUSER	1	SPARE PARTS	B

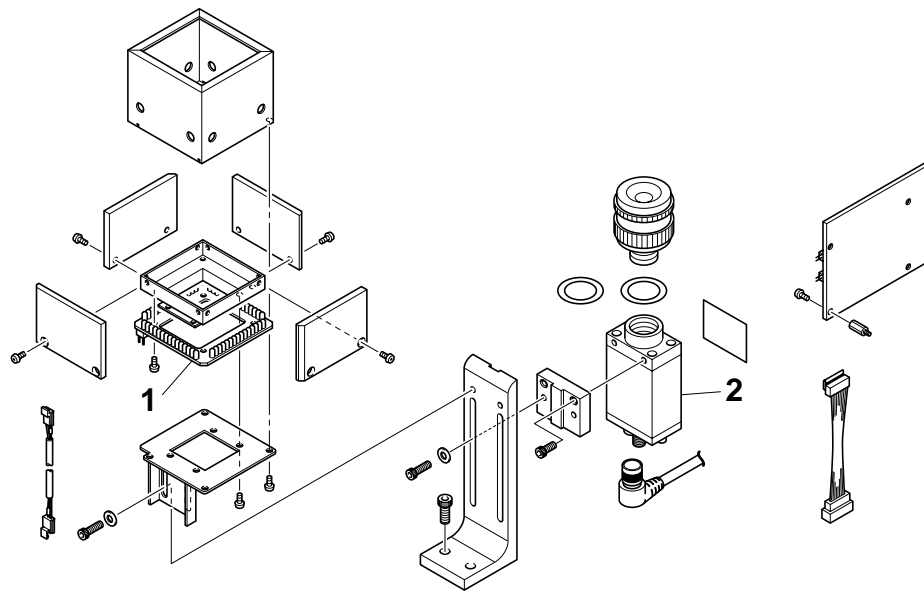
Single Vision Camera A



No.	Part No.	Part Name	Q'ty	Remarks	Rank
1	KG7-M72A5-00X	FORE LIGHT BOARD ASSY	1		B
2	KG9-M7210-10X	CCD CAMERA	1		B

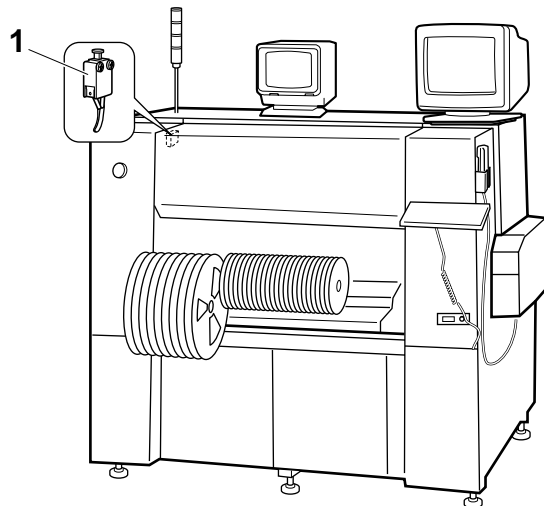
Maintenance Parts

Single Vision Camera B



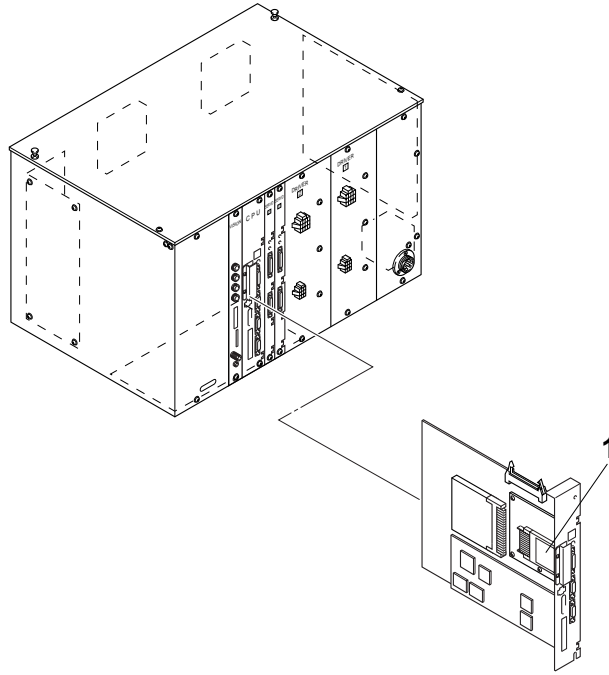
No.	Part No.	Part Name	Q'ty	Remarks	Rank
1	KG7-M72A5-00X	FORE LIGHT BOARD ASSY	1		B
2	KG9-M7210-10X	CCD CAMERA	1		B

Exterior



No.	Part No.	Part Name	Q'ty	Remarks	Rank
1	KH4-M668R-00X	HARNESS	2	LIMIT SWITCH	B

■ Main Box



No.	Part No.	Part Name	Qty	Remarks	Rank
1	KM5-M4255-00X	FLASH DISK	1		B